
Cover & Drawing Schedule

Drawing Schedule

Dwg Number	Dwg Name
S01	Cover & Drawing Schedule
S02	Site Plan - Overall
S03	Site Enlargement-1, Location Plan
S04	Floor Plan
S05	North, East, South & West Elevation
S06	Section A-A, Construction Detail 1-2
S07	Lighting Layout
S08	Path of travel to exit

PROPOSED STORAGE

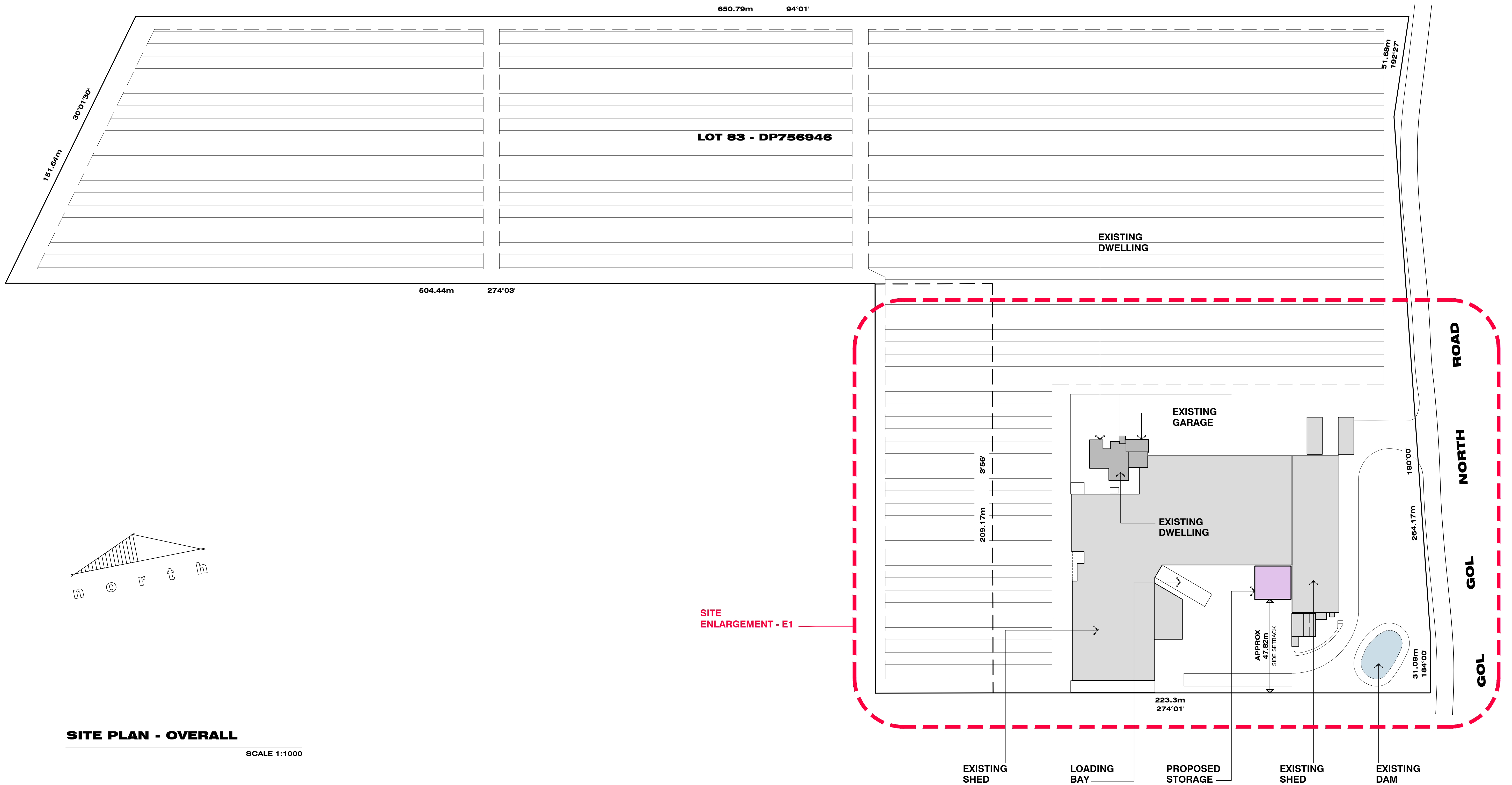
SIMFRESH PTY LTD

S01

No. 2 GOL GOL NORTH ROAD, GOL GOL - NSW 2738

 **INNOVATIVE design**
BUILDING & DRAFTING PROFESSIONALS

2103 FIFTEENTH STREET, IRYMPLE VICTORIA 3498
P. 03 5021 4445 - admin@innovativedesign.com.au
www.innovativedesign.com.au



SITE PLAN - OVERALL

SCALE 1:1000

FIRE EXTINGUISHERS

FIRE EXTINGUISHERS TO BE INSTALLED IN ACCORDANCE WITH AS 2444

- 2A20B(E) DRY CHEMICAL POWDER EXTINGUISHERS ADJACENT TO P/A DOORS.
- 80B(E) DRY CHEMICAL POWDER EXTINGUISHERS ADJACENT TO ENTRY ROLL A DOORS.

FIRE HYDRANT TO BE INSTALLED IN ACCORDANCE WITH AS 2419

- PROVIDE FIRE HOSE REEL (36.0m) IN LENGTH IN ACCORDANCE WITH AS 2441

DOOR FURNITURE

EXIT DOORS: DOOR UNIT FITTED WITH LOCKWOOD HIGH LATCH SINGLE HANDED PUSHING ACTION FOR EGRESS. NO KEY REQUIRED AS PER D2.21 OF THE B.C.A.

DOOR OPENING AGAINST DIRECTION OF SWING TO BE FITTED WITH DEVICE TO HOLD IN THE OPEN POSITION (KITCHEN / PASSAGE) IN ACC. WITH REGULATION D2.20

FLOOR LAYOUT

SCALE 1:200

GENERAL NOTES:

ALL WORKS TO BE CARRIED OUT IN ACCORDANCE WITH THE NATIONAL CONSTRUCTION CODE & ALL OTHER RELEVANT STANDARDS.

CONTRACTORS TO CHECK SITE DIMENSIONS BEFORE COMMENCEMENT OF WORK. WRITTEN DIMENSIONS TAKE PRECEDENCE OVER SCALE.

FIGURED DIMENSIONS HAVE PREFERENCE TO SCALE. PLANS SHALL BE READ IN CONJUNCTION WITH THE PROJECT SPECIFICATIONS & ATTACHED DOCUMENTATION.

IT IS THE BUILDERS RESPONSIBILITY TO ENSURE THAT THE BUILDING IS WITHIN THE DESIGNATED BOUNDARIES AND VERIFY THAT THE SITE IS SHOWN CORRECT.

IT IS THE BUILDERS RESPONSIBILITY TO NOTIFY THE DESIGNER OF ANY SERVICES WHICH MAY HINDER CONSTRUCTION OR CAUSE ALTERATIONS TO DESIGN BEFORE COMMENCING ANY WORK.

LEGEND:

C1 STRUCTURAL COLUMN BY ENGINEER.

BR1 16mm DIAMETER ROD BRACE WITH TENSION.

DH DOOR HEADER BEAM BY ENGINEER.

M1 STRUCTURAL MULLION, FLY BRACE @ MIDSPAN.

T1 OPEN WEB STEEL TRUSS - BY ENGINEER.

BRACING

WB1 WALL BRACE - 20mm DIAMETER ROD BRACE WITH TENSION.

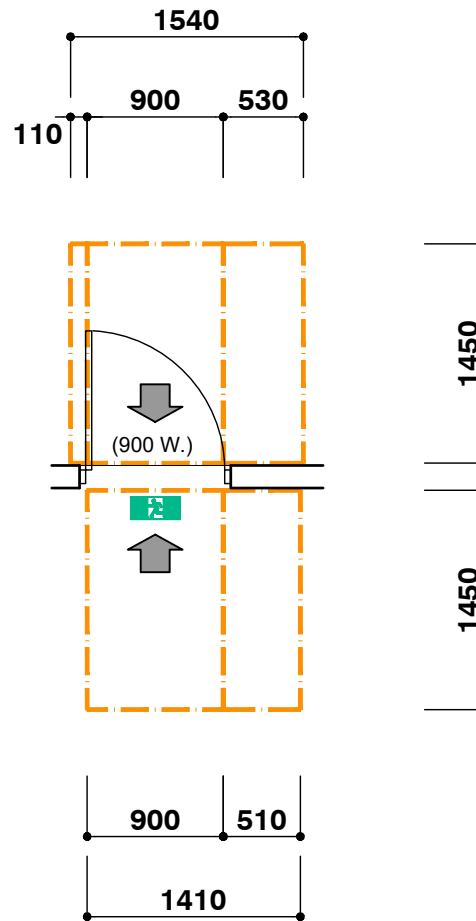
LIGHTING

ARTIFICIAL LIGHTING TO BE IN ACCORDANCE WITH AS1680.1 AND AS1680.2

EMERGENCY LIGHTING TO BE INSTALLED IN ACCORDANCE WITH AS 2293. 40 WATT EMERGENCY LUMINAIRE NI-CAD 8130 PR BY CLEVERTRONICS SUSPENDED FROM CHAINS @6.0m MOUNTED HEIGHT.

A BATTERY BACKED UP ILLUMINATED EMERGENCY EXIT LIGHT INSTALLED AND OPERATIONAL IN ACCORDANCE WITH AS 2293.1

SURFACE MOUNTED ILLUMINATED EXIT SIGN. REQUIRED EXIT MUST BE READILY OPEN ABLE WITHOUT A KEY FROM THE SIDE THAT FACES A PERSON SEEKING EGRESS. BY A SINGLE HAND DOWNWARD ACTION OR PUSHING ACTION ON A SINGLE DEVICE WHICH IS LOCATED 900mm AND 1200mm FROM THE FLOOR. (N.C.C. - D2.21)



CIRCULATION SPACE AT EXIT DOORWAY AS PER FIGURE 31 OF A.S.1428.1

AREAS:

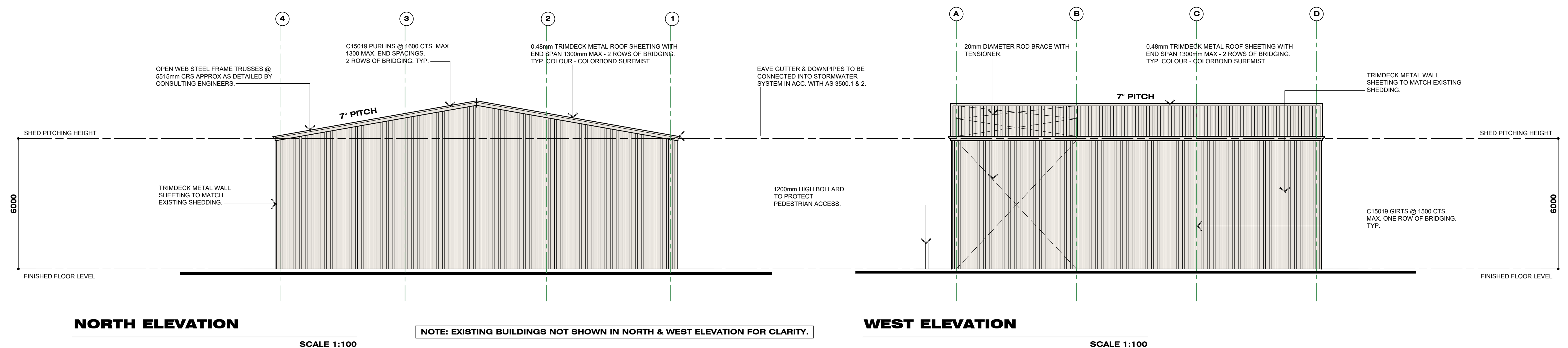
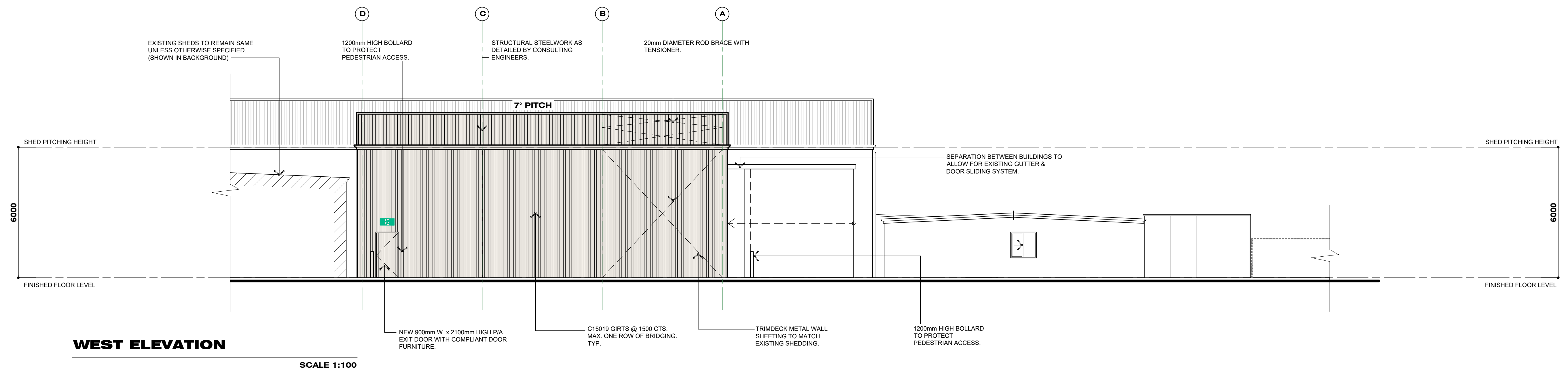
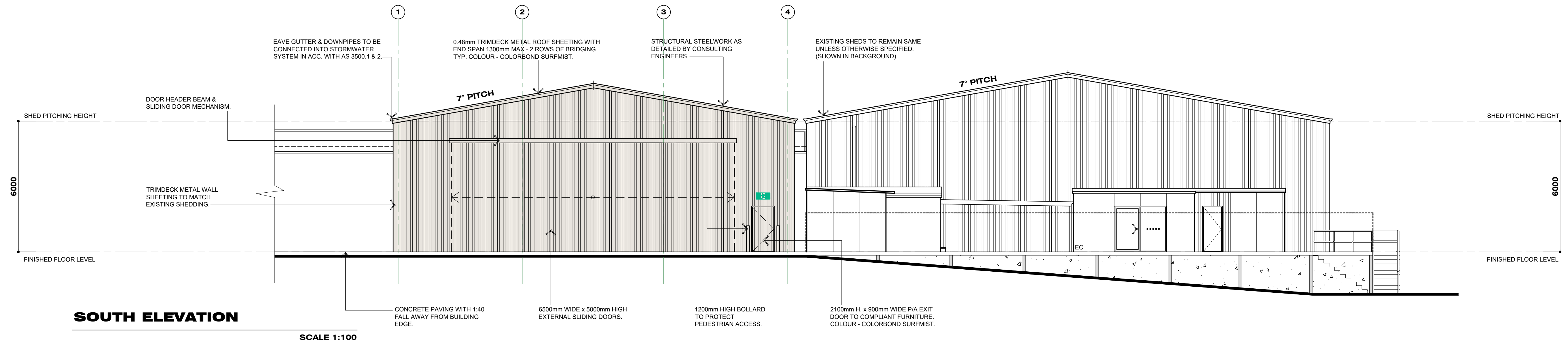
PROPOSED STORAGE 314.50m²

EXISTING AREAS:

MAIN BUILDING	4,705 m ²
PREVIOUS EXTENSION	1,920 m ²
AMENITIES BLOCK	144.00 m ²
COOL ROOM 1 & 2	504.41 m ²
COOL ROOM 3 & 4	476.17 m ²
COOL ROOM 5 & 6	632.25 m ²
COOL ROOM 7 & 8	634.55 m ²
PROPOSED EXTENSION	890.40 m ²
EXISTING OFFICE	234.50 m ²
EXISTING STORAGE	343.02 m ²

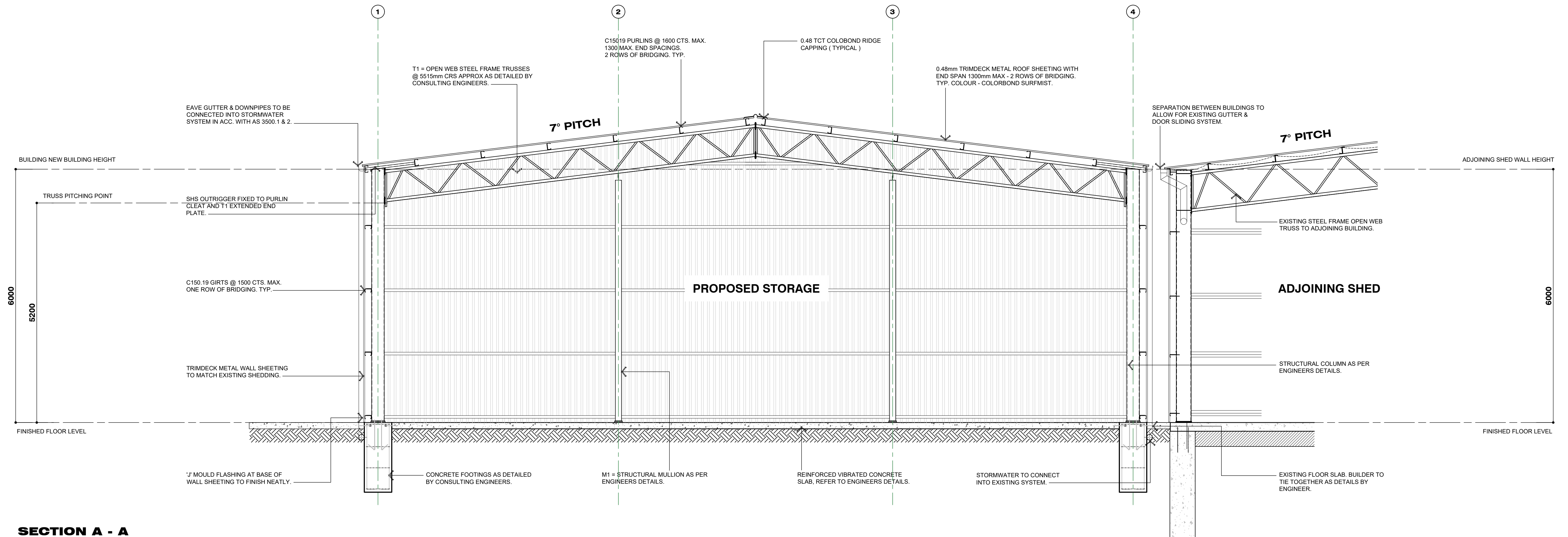
TOTAL OF ALL AREAS: 10,798.52 m²

DENOTES:
PROPOSED NEW WORKS.



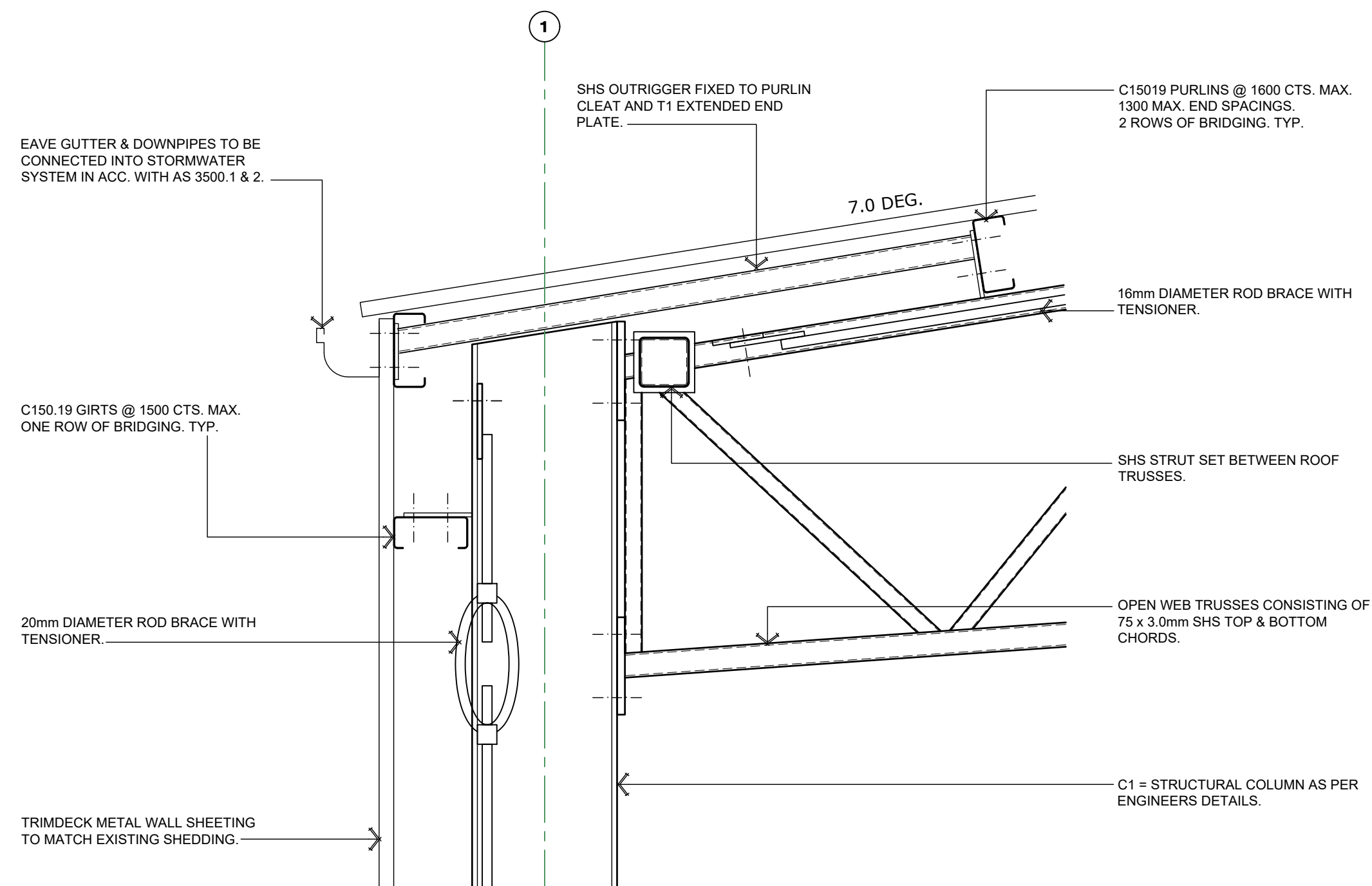
NOTE: EXISTING BUILDINGS NOT SHOWN IN NORTH & WEST ELEVATION FOR CLARITY.





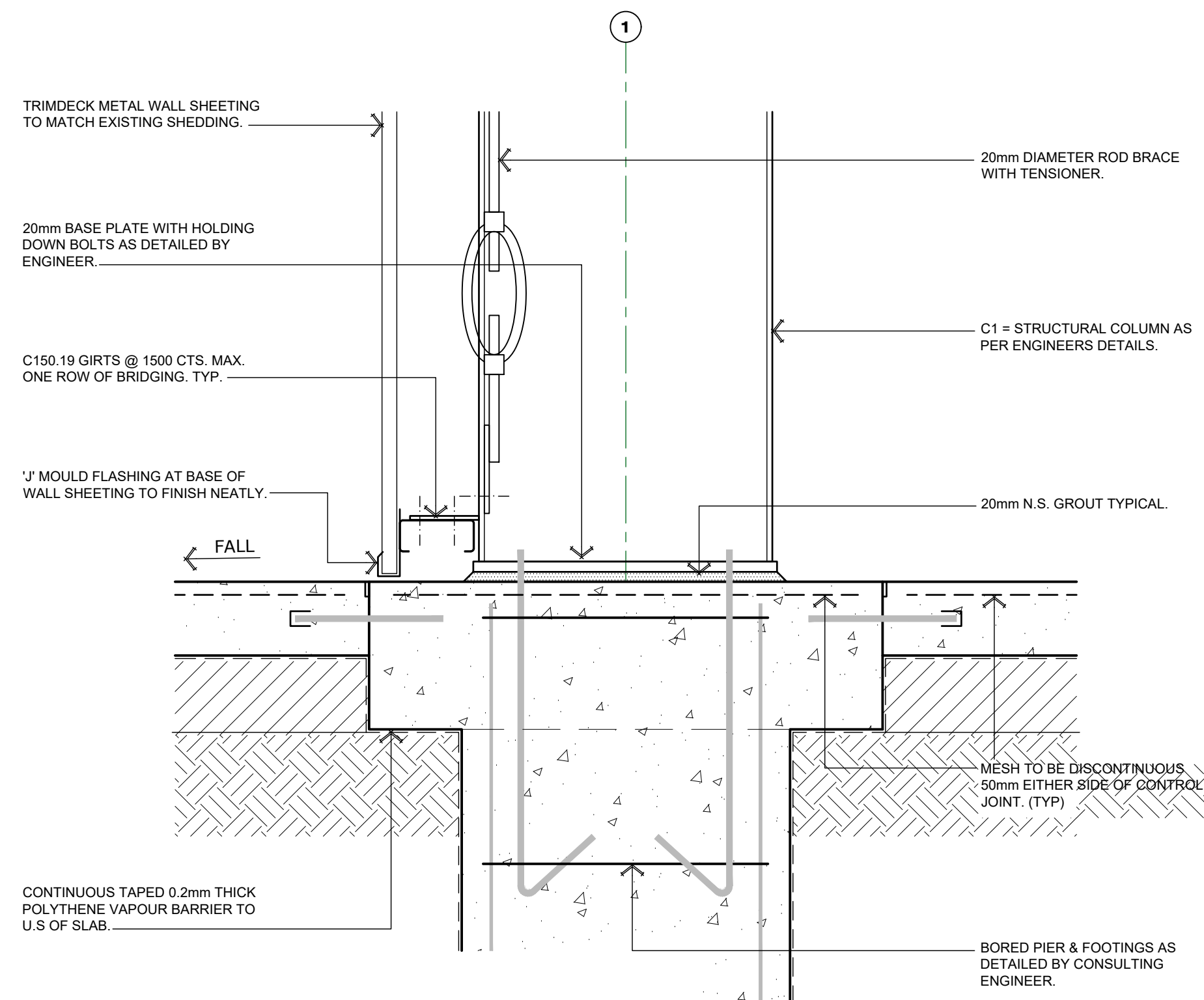
SECTION A - A

SCALE 1:50



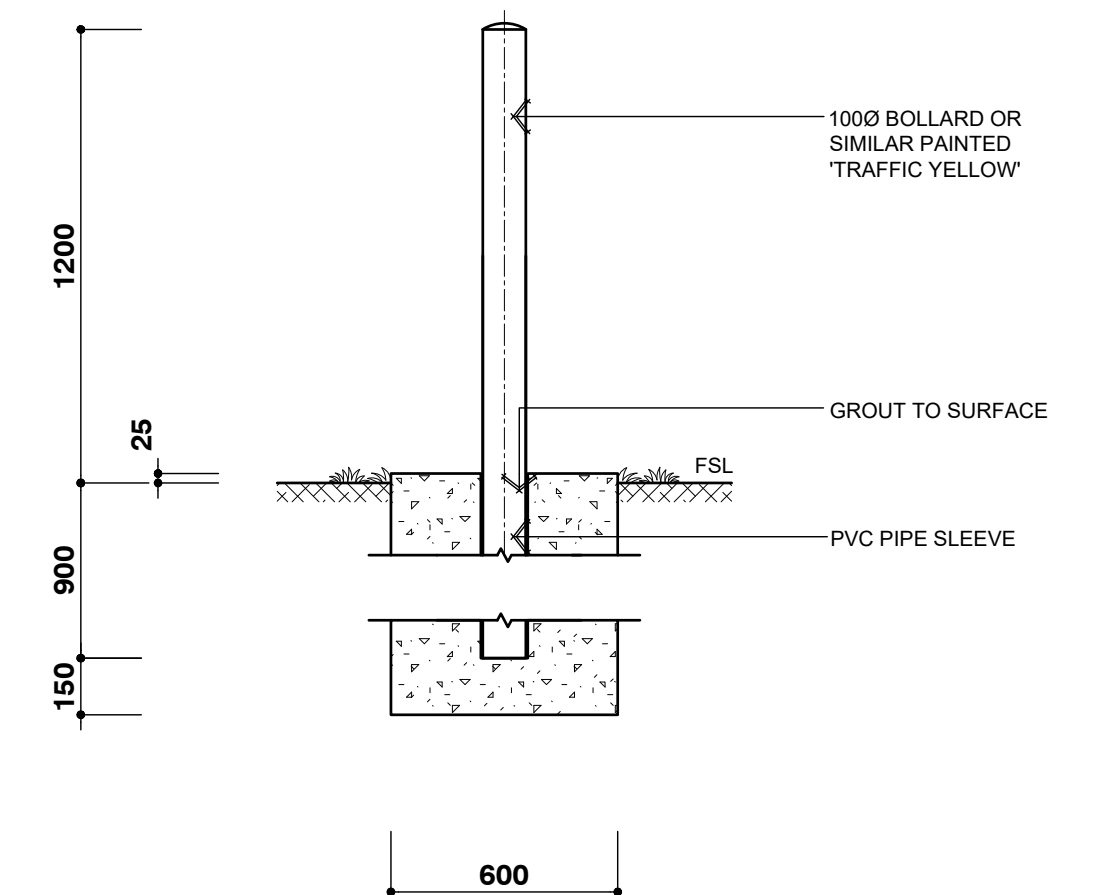
CONSTRUCTION DETAIL -1

SCALE 1:50



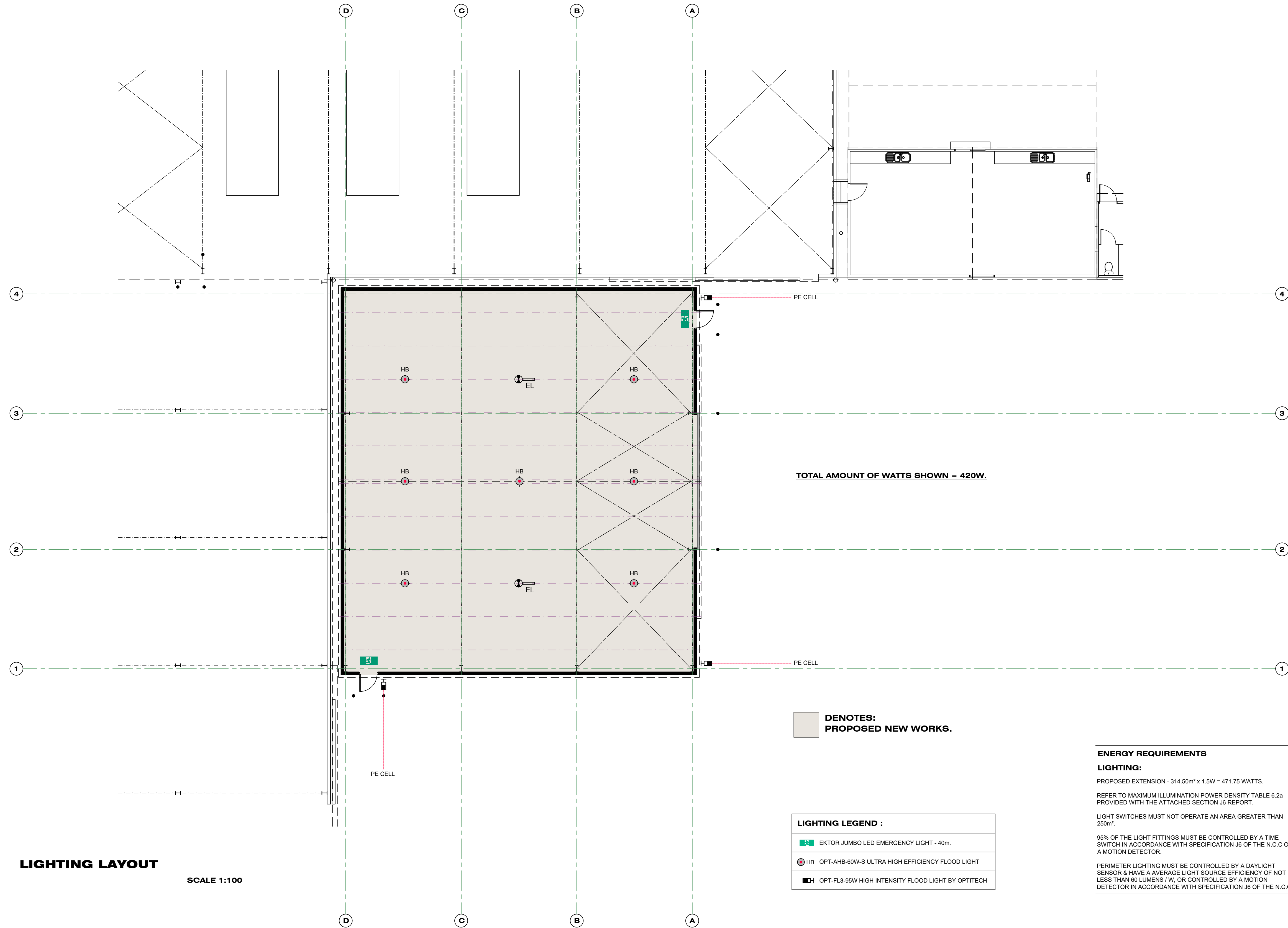
CONSTRUCTION DETAIL -2

SCALE 1:50



TYPICAL BOLLARD DETAIL

N.T.S.



ENERGY REQUIREMENTS

LIGHTING:

PROPOSED EXTENSION - 314.50m² x 1.5W = 471.75 WATTS.

REFER TO MAXIMUM ILLUMINATION POWER DENSITY TABLE 6.2a PROVIDED WITH THE ATTACHED SECTION J6 REPORT.

LIGHT SWITCHES MUST NOT OPERATE AN AREA GREATER THAN 250m².

95% OF THE LIGHT FITTINGS MUST BE CONTROLLED BY A TIME SWITCH IN ACCORDANCE WITH SPECIFICATION J6 OF THE N.C.C OR A MOTION DETECTOR.

PERIMETER LIGHTING MUST BE CONTROLLED BY A DAYLIGHT SENSOR & HAVE A AVERAGE LIGHT SOURCE EFFICIENCY OF NOT LESS THAN 60 LUMENS / W, OR CONTROLLED BY A MOTION DETECTOR IN ACCORDANCE WITH SPECIFICATION J6 OF THE N.C.C.

